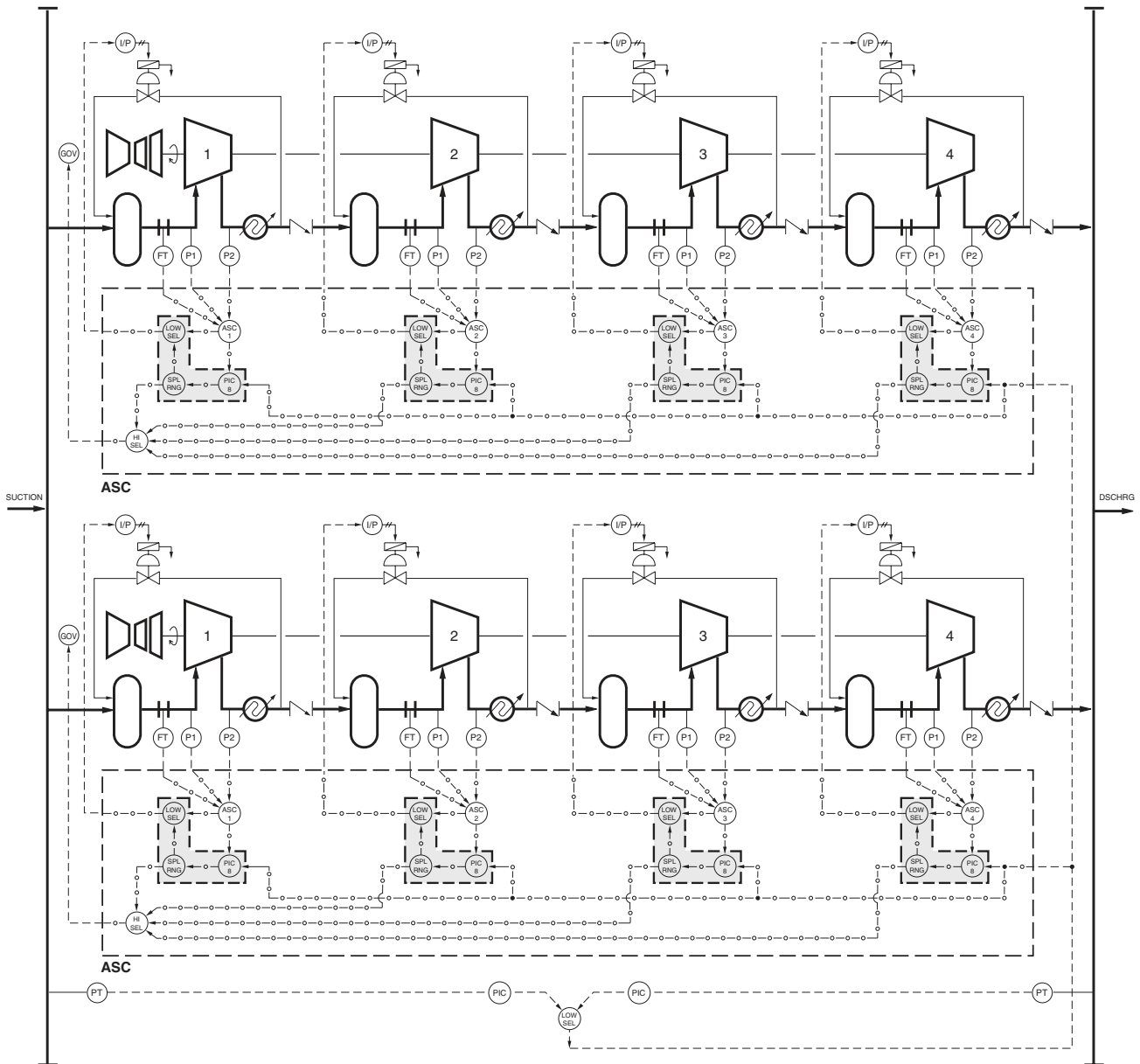


MULTIPLE-BODY COMPRESSOR LOADSHARE CONTROLLER APPLICATION CONTROL PACKAGE



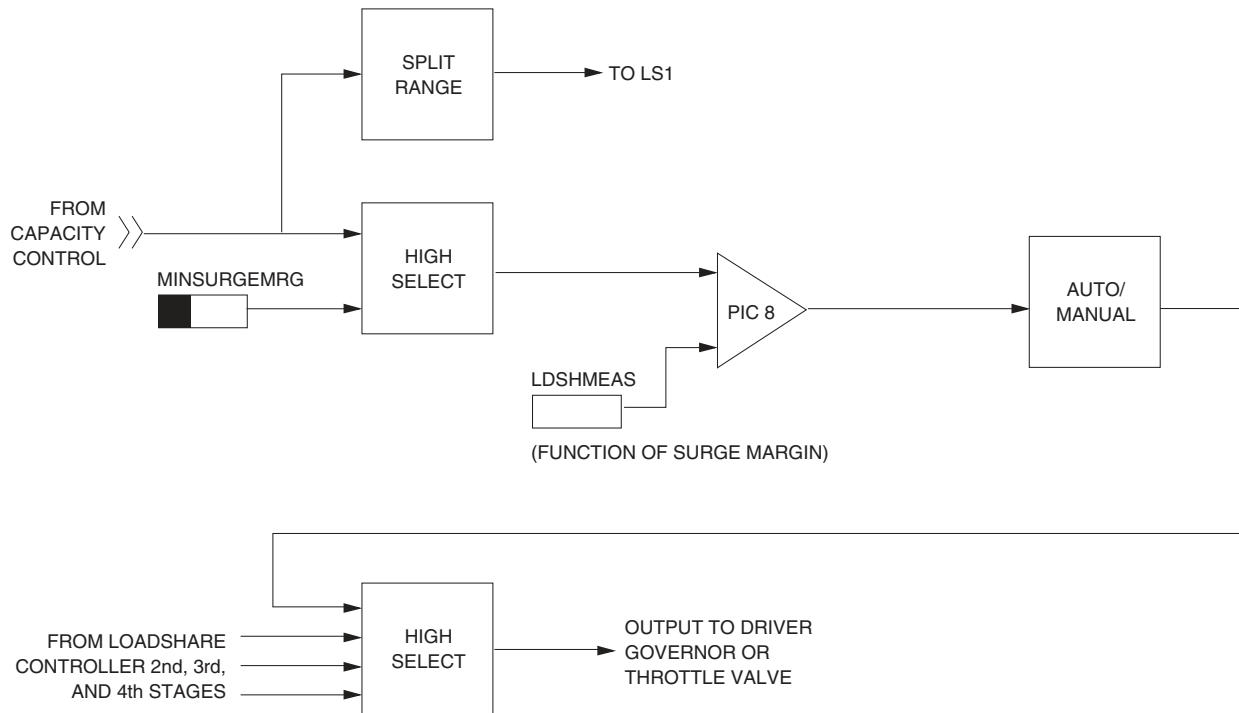
MAY 2012



Simplified instrument diagram showing the multiple-body compressor Loadshare Controller option using ASC measurements to provide speed or throttle adjustment for equal surge margin operation of multiple compressors in parallel. The output can control a driver governor as shown, or a throttle valve.



SIMPLIFIED FUNCTIONAL BLOCK DIAGRAM



TUNING, SETPOINTS, AND CONFIGURATION

- Select loadshare controller service:
 - 0 = Not in service
 - 1 = In service
- Loadshare controller tuning constants.
- Output configuration:
 - Minimum mA
 - Maximum mA
 - Direct/reverse

SCOPE OF SUPPLY

- Multiple Body Compressor Loadshare Controller option, includes:
- All of the control functions shown above, added to a ASC application control package operating on a PLC hardware platform.
- Not included:**
- Multiple-Body Integrated Compressor Control application control package (required).
 - PLC hardware. TYPICAL PERFORMANCE

Petrotech, Inc.
 151 Brookhollow Esplanade
 New Orleans, Louisiana 70123
 USA

Phone: (504) 620-6600
 Fax: (504) 620-6601
 Email: info@petrotechinc.com
 Website: www.petrotechinc.com